

Corners to be Indexed

SW 6-106-42
 N1/4 6-106-42
 W1/4 6-106-42
 E1/4 1-106-43
 NE 12-106-43

FEB 16 2021

Karen Brown

I hereby certify that this document and the data contained herein was prepared by me or under my direct supervision.

Daniel L. Bueltel

4/14/20

Daniel L. Bueltel

Date

License No. 43844

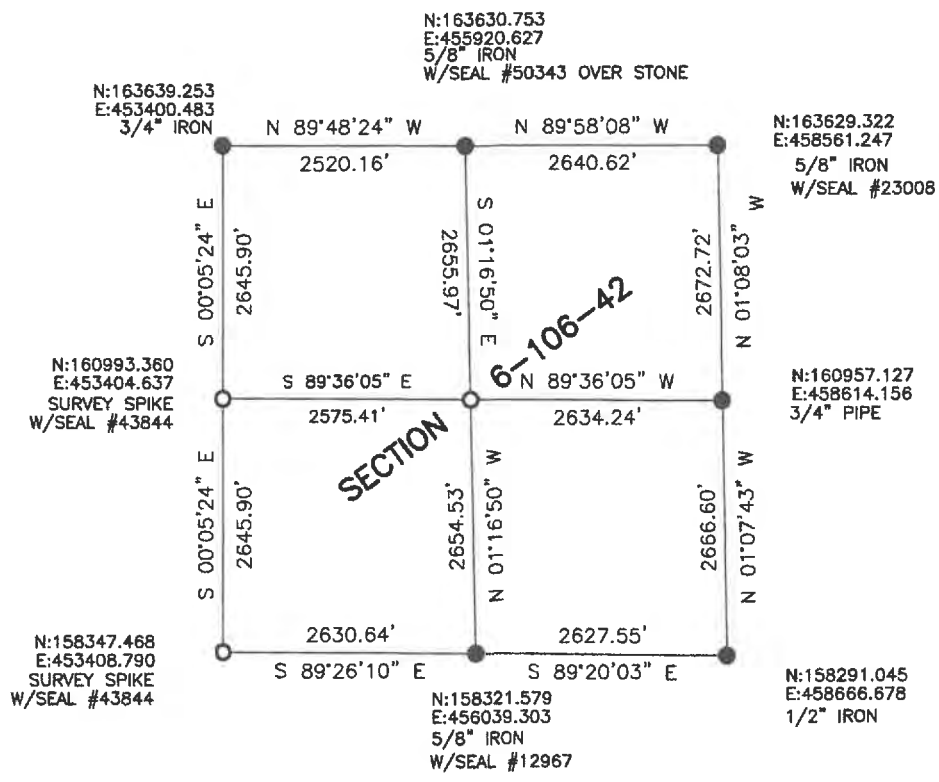
CERTIFICATE OF LOCATION OF GOVERNMENT CORNER

Land survey monuments situated in Section 6, Township 106, Range 42, 5TH P.M.

STATE OF MINNESOTA, County of Murray



- FOUND MONUMENT
- SET MONUMENT



Minnesota State Plane Coordinate
 System Murray County Datum NAD83 (1996)

Statement of Evidence

SW 6-106-42 (NE 12-106-43)

In 1866 J.W. Bishop did the original subdivision of the township.

MNDOT plans show a found stone 4.5' east of centerline.

No date - Gary Martin found 5/8" iron.

On April 15, 2019, Bueltel-Moseng Land Surveying set a 3" survey spike w/seal # 43844 using computations from Martin field notes. In line with fence to the west and the centerline of the road- 4'± East of painted centerline.

N1/4 6-106-42

In 1866 J.W. Bishop did the original subdivision of the township.

On April 19, 2019, Bueltel-Moseng Land Surveying dug with backhoe and found a field stone ±2' below surface. It is in the centerline of the road. 3.8' east of proportionate distance. Fits w/occupation line to the North. Set 5/8" iron w/seal #50343 over stone.

W 1/4 6-106-42 (E1/4 1-106-43)

In 1866 J.W. Bishop did the original subdivision of the township.

On April 23, 2019, Bueltel-Moseng Land Surveying set survey spike w/seal #43844 midway and online between section corners. It is in line with fence to the west and 3.4'± West of painted centerline.